

SPECIFICATIONS

Range	-94.99 to 399.99°F (-69.99 to 199.99°C)
Resolution	0.01° or 0.1°
Accuracy	±0.1°F (±0.05°C) from -22 to 302°F (-30 to 149.99°C) otherwise ±0.36°F (±0.2°C)
Operating Range	-4 to 122°F (-20 to 50°C)
Probe	1 x AAA, approx. 500 hours without backlight
Auto-Off	After 10 min. to save battery life
Water	IP67
Resistance	
Probe	4.25 L x 0.125 dia. inches (108 L x 3.3 dia. mm)
Sensor Type	4-wire PT100 1/3 DIN
Display	1 H x 1.54 W inches (25 H x 39 W mm) rotates 180°, intelligent backlight
Dimensions	6.1 W x 1.7 H x 0.74 D inches (48.2 W x 156.2 H x 19.3 D mm)
Weight	4.05 oz. (115 g)
Calibration	UKAS Accredited Calibration Certificate

ACCESSORIES



PROTECTIVE LEATHER WALLET
Model: 830-110-LX



PROTECTIVE ZIPPER WALLET
Model: 830-001



WALL MOUNT BRACKET
Model: 10203



MAGNETIC GLOW-IN-THE-DARK SILICONE BOOT
Model: 830-455



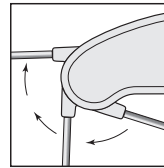
ThermoWorks

Reference ThermoMapen®



INSTRUMENT OPERATION

Reference ThermoMapen is switched on by unfolding the probe until the display shows the temperature. The instrument is turned off by folding the probe back into the side of the instrument. The probe should not be rotated more than 180 degrees as damage will occur. It is recommended to store the probe in the closed position, when not in use.




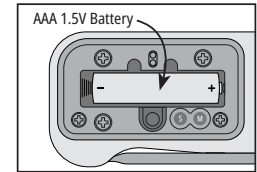
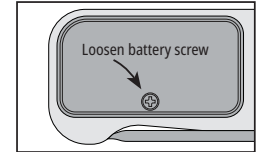
Apply the probe to the substance to be measured. For optimum accuracy immerse at least 70mm of the probe in the substance.



The probe tip is very sharp and therefore caution should be taken when using. Care should also be taken when closing the probe after taking hot temperatures as the probe may remain hot.

BATTERY REPLACEMENT

A low battery symbol  will appear when the battery (1 x AAA) needs replacing, in this condition the backlight is set to a low level to save battery life. The instrument continues to measure accurately but we recommend that the battery is changed as soon as possible.



To replace the battery, loosen the battery cover screw using a phillips screwdriver to remove the battery cover. Replace with a single AAA battery noting the polarity. Tighten the battery cover screw until the battery cover is snug onto the seal. Do not over-tighten.



POLYGIENE
COLLECTIBLE BRAND



ThermoWorks

741 E. Utah Valley Dr., American Fork, UT 84003
PH: 801-976-7700 Fax: 801-976-0948
thermoworks.com

Made in the UK

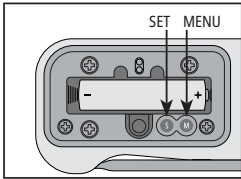


Operating Instructions

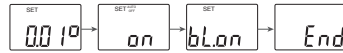
INSTRUMENT CONFIGURATION

This instrument has two small buttons inside the battery cover: MENU, which is used to enter, save settings and exit the menu and SET, which is used to select the desired settings. To alter any of the settings, open the battery cover using a phillips screwdriver to gain access to the buttons. Open the probe to turn the unit on. Settings are saved once 'END' is displayed. To abort settings, close the probe.

Press the MENU button to cycle through the following settings.



Menu Cycle (Default settings shown)

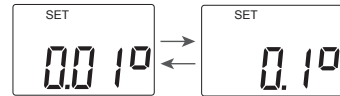


TEMPERATURE DISPLAY UNITS, °F or °C

Press the menu button until 'C or F' is displayed. Press SET to toggle between °F and °C as displayed in the upper right-hand corner of the display. When the selection is complete, press MENU to store reading.

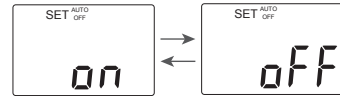
RESOLUTION

Press the MENU button so that '0.01°' or '0.1°' is displayed, press the SET button to select the required display.



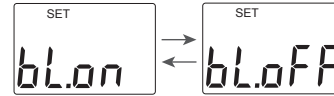
AUTO-OFF

Press the MENU button until 'SET AUTO OFF' is displayed and use the SET button to set 'on' or 'off'. When set to 'on' the instrument will shut down after 10 minutes.



BACKLIGHT

Press the MENU button until 'SET bL.on' or SET bL.off' is displayed, press the SET button to select the required setting.



INSTRUMENT CLEANING

Clean the instrument regularly with an anti-bacterial probe wipe to avoid potential bacterial growth.

ERROR MESSAGES

'Err' will be displayed if the probe develops a fault. If the error message remains, contact ThermoWorks' Tech Support for further assistance.

PRODUCT WARRANTY

This instrument carries a two-year guarantee against defects in either components or workmanship. During this period, products that prove to be defective will, at the discretion of ThermoWorks, be either repaired or replaced without charge. This guarantee does not apply to sensors/probes, where a six-month period is offered. Full details of liability are available within ThermoWorks Terms & Conditions of Sale at www.thermoworks.com/product-warranty.

For warranty, service, and technical assistance, please contact ThermoWorks' Technical Support at (385) 330-0591 or email at techsupport@thermoworks.com.

This instrument has been checked or calibrated against reference instrument(s) calibrated by a UKAS Accredited Calibration Laboratory.